



# neoConnex

A Text Messaging & GPS Application for  
MOTOTRBO™ Connect Plus

Designed for Carriers & Large Enterprises



## Summary of Features

MOTOTRBO™ multi-platform support in a single system

- Connect Plus
- Capacity Plus
- IP Site Connect
- Conventional
  - Allows for seamless migration for carriers with multiple system types to support users all on a single platform
  - Subscriber roaming is automatic between systems

Client/Server™ application

- Server supports up to 100 client connections with Windows based client
  - Clients capable of text messaging and GPS tracking


Web Based

- Web based archive reporting tools
- Optional neoConnex Web ASP.NET web based mapping solution
  - Google map, satellite and hybrid views

Software Solutions for Connect Plus

## Summary of Features Con't

### Scalable

- SQL Server support
  - Bundled with SQL Express, SQL Server is available as an option
  - Multi time zone support
    -  • The server, neoNytro Nodes and Clients can be in any time zone and time stamps are coordinated.

### Designed for single Corporation or large scale Carrier solutions

- Up to 6 fully loaded CONNECT PLUS systems
- Up to 10 neoNytro Node applications each supporting ONE of the following configurations:
  - Up to 4 conventional or IP Site Connect
  - Capacity Plus

### Text Messaging

- Dispatch client to subscriber radio text messaging
  - Store and forward an unlimited number of messages per subscriber radio
  - Aging function deletes older messages

## Software Solutions for Connect Plus

## Summary of Features Con't

### Email/Text

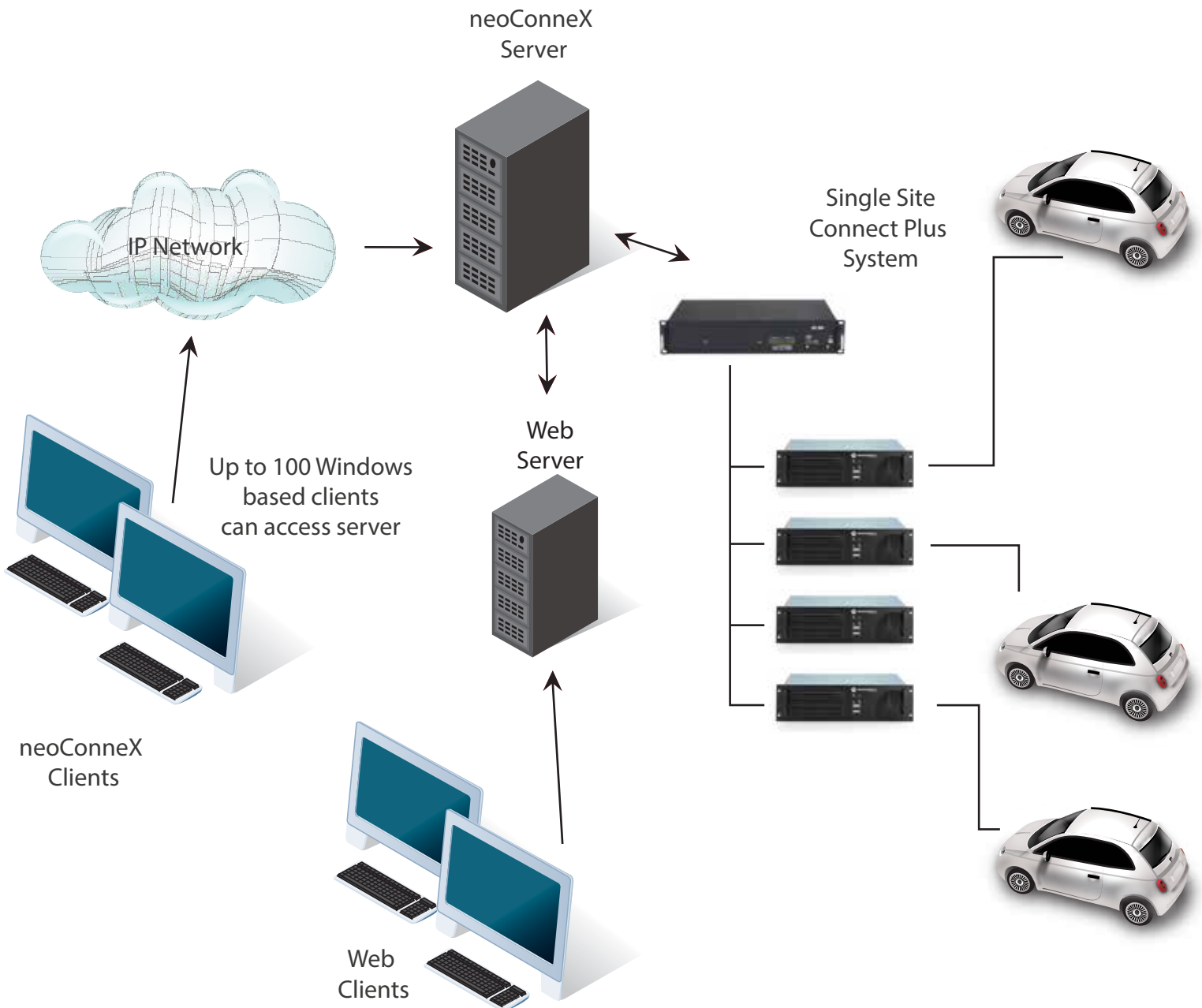
- Integrated email to text gateway
- Email/Text
  - Scada support
    - RS232
    - SNPP
  - Hospitality support
    - GuestWare
    - Starwood
    - Angus Anywhere

### GPS

- Scheduled GPS updates from subscribers
- Wide mapping choices
  - Microsoft MapPoint
  - Internet map control with 27 online sources including Yahoo maps, Google maps and Bing maps.
- Native ESRI Support
  - Build multilayered map projects with end user ESRI or GDI map data.

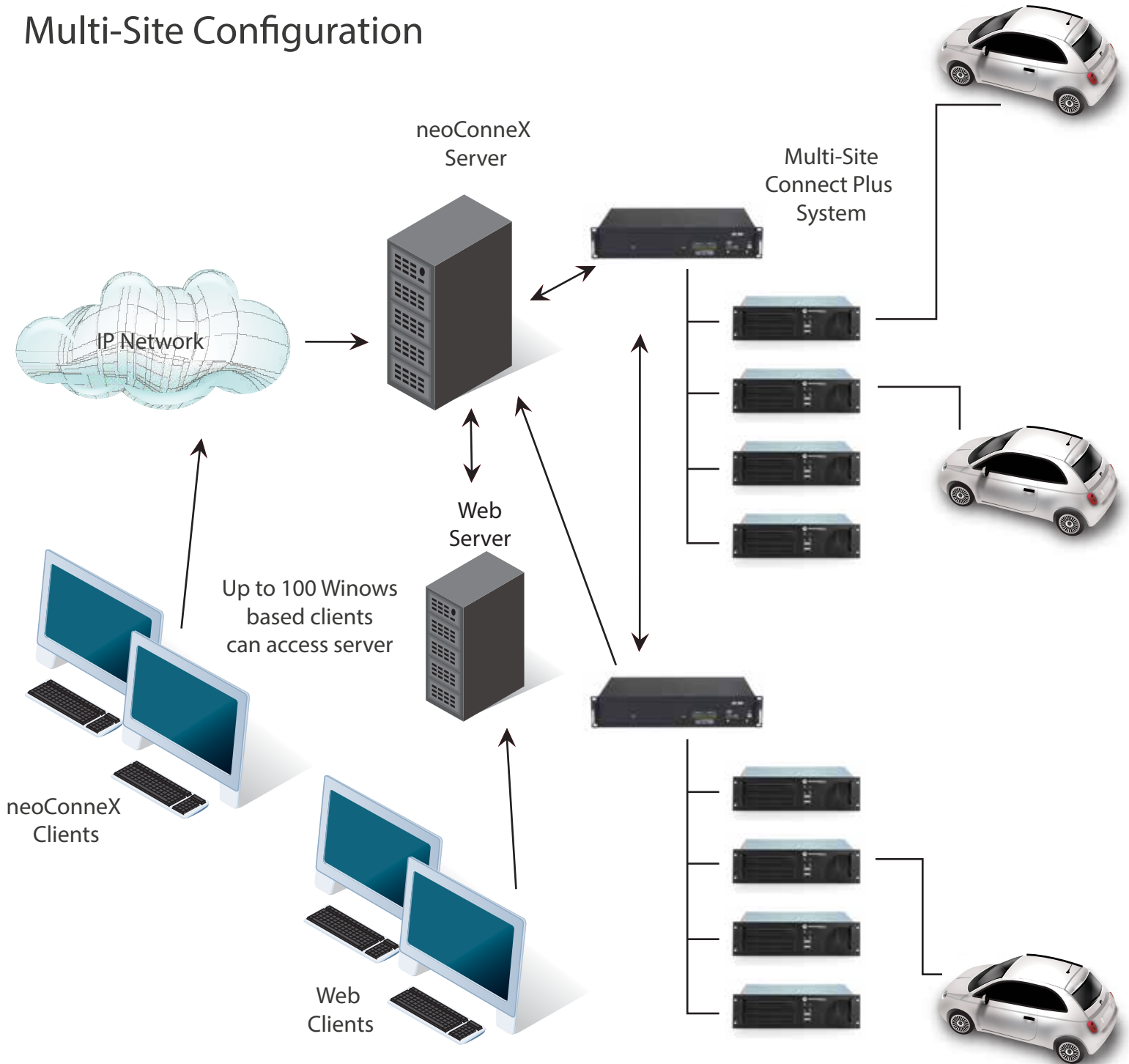
Software Solutions for Connect Plus

## Basic Configuration



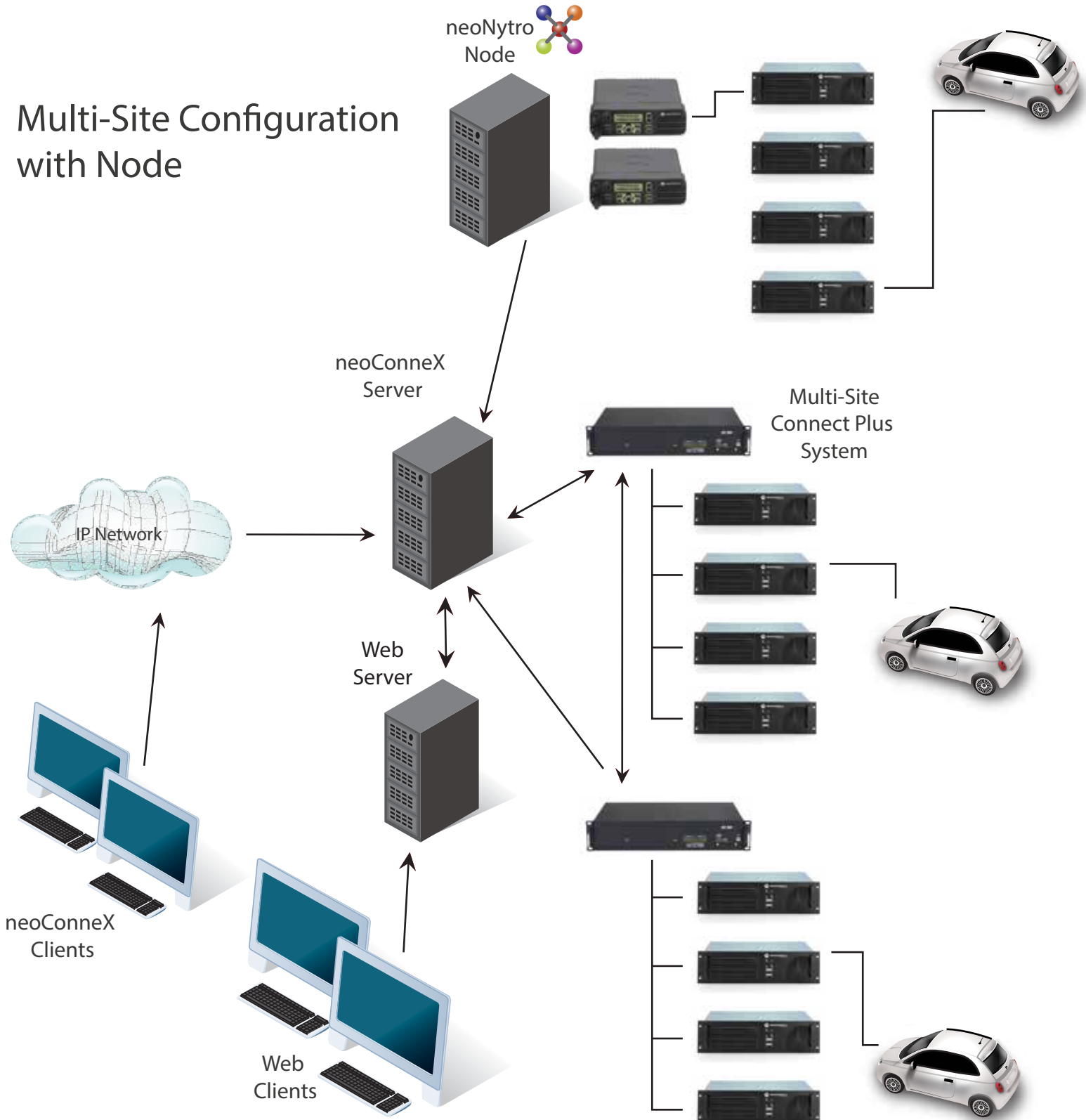
## Software Solutions for Connect Plus

## Multi-Site Configuration



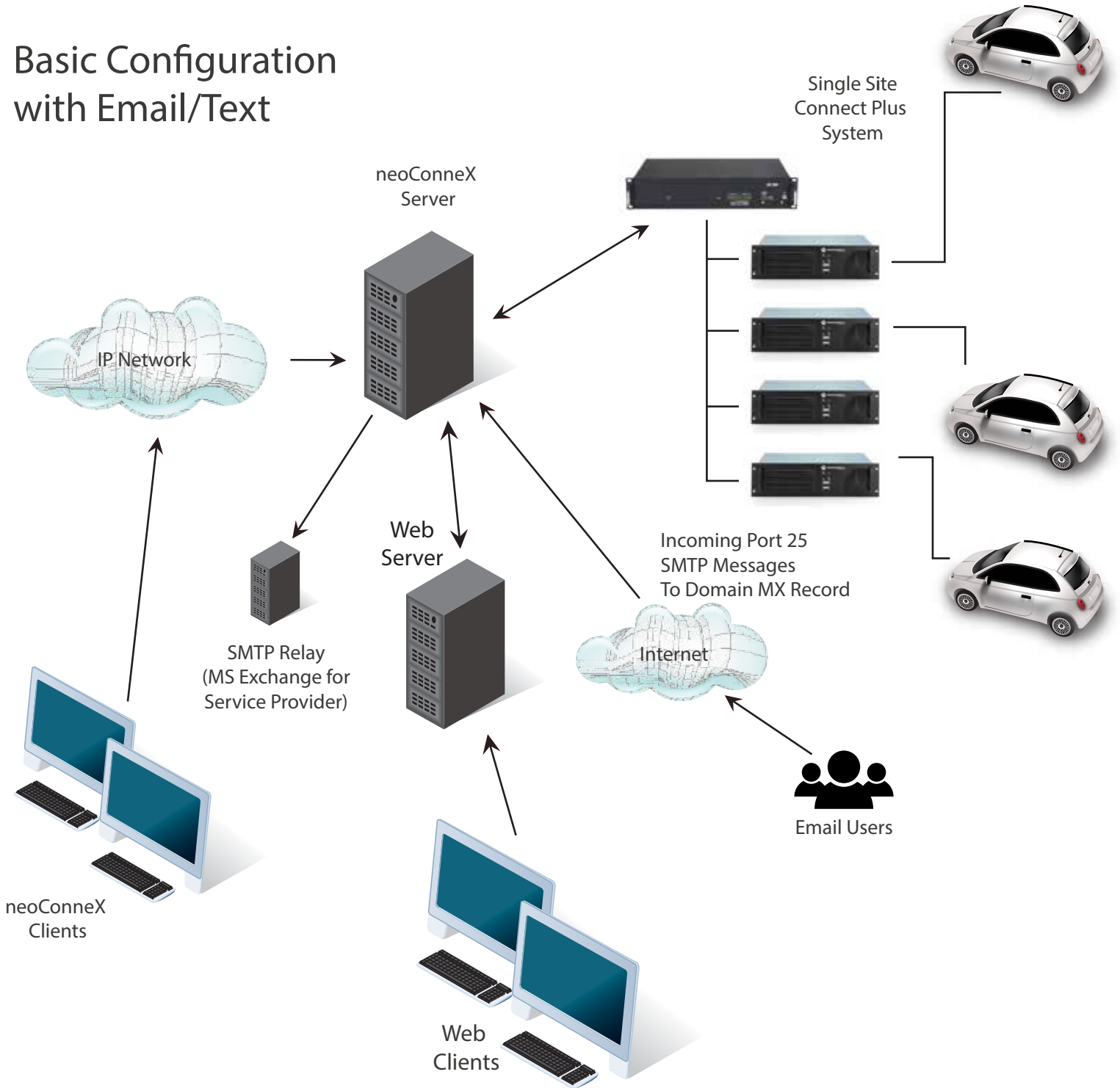
## Software Solutions for Connect Plus

## Multi-Site Configuration with Node



## Software Solutions for Connect Plus

## Basic Configuration with Email/Text



## Software Solutions for Connect Plus



# Server Screen

File Setup Clear Server About

System Interfaces Traffic Messages

### Controller Traffic

Date/Time	System	UnitID	Message
30 Aug 2010 06:41:00 PM	Dallas	2	GPS report
30 Aug 2010 06:40:45 PM	Shaumburg	1158	GPS report
30 Aug 2010 06:40:43 PM	Shaumburg	1156	GPS report
30 Aug 2010 06:40:30 PM	Dallas	2	GPS report
30 Aug 2010 06:40:13 PM	Shaumburg	1158	GPS report
30 Aug 2010 06:40:10 PM	Shaumburg	1156	GPS report
30 Aug 2010 06:40:00 PM	Dallas	2	GPS report
30 Aug 2010 06:39:41 PM	Shaumburg	1158	GPS report
30 Aug 2010 06:39:38 PM	Shaumburg	1156	GPS report
30 Aug 2010 06:39:30 PM	Dallas	2	GPS report
30 Aug 2010 06:39:08 PM	Shaumburg	1158	GPS report
30 Aug 2010 06:39:06 PM	Shaumburg	1156	GPS report
30 Aug 2010 06:39:00 PM	Dallas	2	GPS report
30 Aug 2010 06:38:36 PM	Shaumburg	1158	GPS report
30 Aug 2010 06:38:34 PM	Shaumburg	1156	GPS report
30 Aug 2010 06:38:30 PM	Dallas	2	GPS report
30 Aug 2010 06:38:04 PM	Shaumburg	1158	GPS report
30 Aug 2010 06:38:01 PM	Shaumburg	1156	GPS report
30 Aug 2010 06:38:00 PM	Dallas	2	GPS report
30 Aug 2010 06:37:31 PM	Shaumburg	1158	GPS report
30 Aug 2010 06:37:30 PM	Dallas	2	GPS report
30 Aug 2010 06:37:29 PM	Shaumburg	1156	GPS report
30 Aug 2010 06:37:00 PM	Dallas	2	GPS report
30 Aug 2010 06:36:59 PM	Shaumburg	1158	GPS report
30 Aug 2010 06:36:57 PM	Shaumburg	1156	GPS report

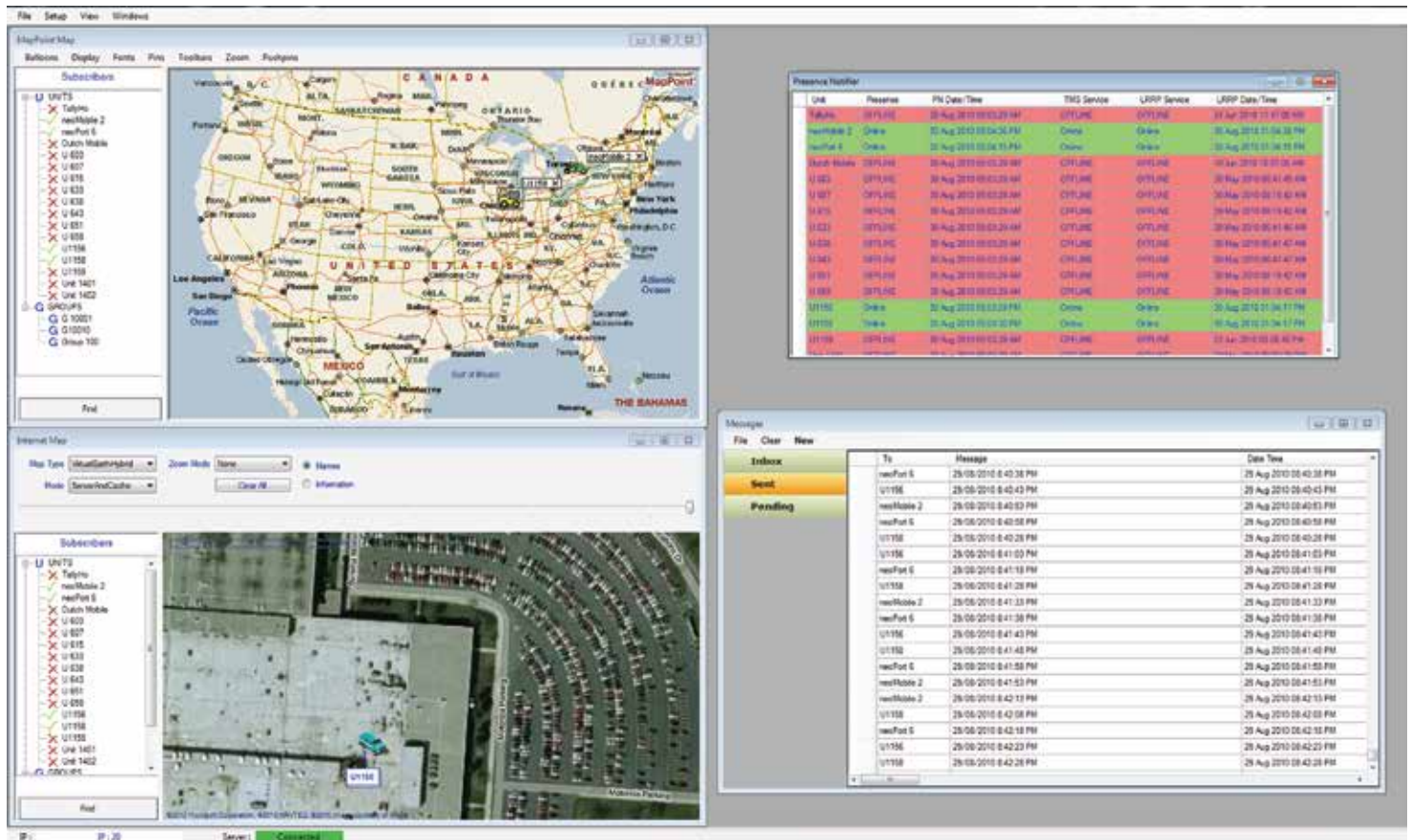
### Connection Activity

Date/Time	Activity
30 Aug 2010 05:05:16 PM	A client from [192.168.0.123:4663] has connected
30 Aug 2010 05:02:49 PM	A node from [192.168.0.123:4654] has connected
30 Aug 2010 05:02:44 PM	server started listening for connections
30 Aug 2010 05:02:43 PM	server started listening for connections
30 Aug 2010 11:05:57 AM	server stopped listening for connections
30 Aug 2010 11:05:52 AM	A client from [192.168.0.123:2070] timed out
30 Aug 2010 11:05:35 AM	A client from [192.168.0.123:2070] has connected
30 Aug 2010 11:03:36 AM	A client from [192.168.0.123:2040] timed out
30 Aug 2010 10:57:56 AM	A client from [192.168.0.123:2040] has connected
30 Aug 2010 10:56:33 AM	A node from [192.168.0.123:2026] has connected
30 Aug 2010 10:56:31 AM	server started listening for connections
30 Aug 2010 10:56:21 AM	server started listening for connections

Clients	
client500	192.168.0.123:4663

Nodes	
Dallas	192.168.0.123:4654

## Client Screen

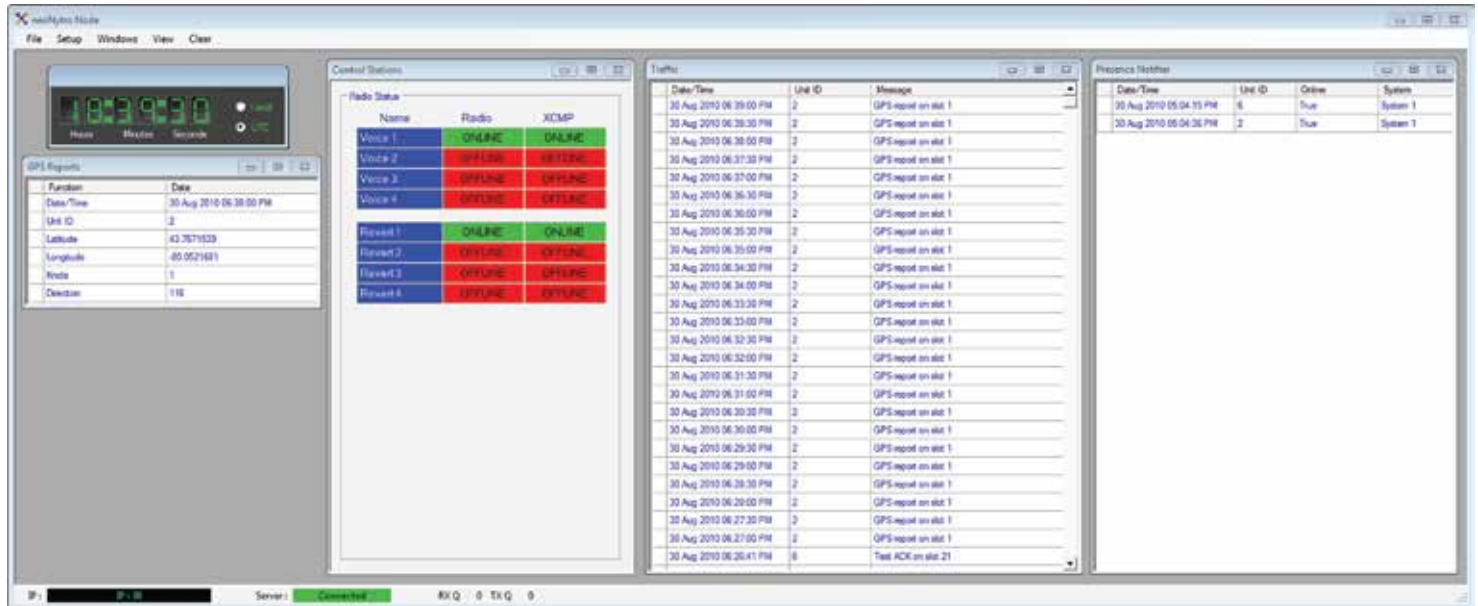


The screenshot displays the NeoTerra Systems client interface, which is divided into several functional areas:

- MapFour Map:** A large map of North America showing service coverage. A sidebar on the left lists subscribers such as T-Mobile, NextMobile 2, and various U.S. carriers (U-807, U-816, U-833, U-838, U-843, U-851, U-858, U-1156, U-1158, U-1401, U-1402, G-Sprint, G-Verizon, G-AT&T, G-Orange).
- Presence Monitor:** A table displaying real-time presence data for various subscribers. The table includes columns for ID, Presence, PM Date/Time, TMS Service, LPP Service, and LPP Date/Time.
 

ID	Presence	PM Date/Time	TMS Service	LPP Service	LPP Date/Time
NextMobile 2	On-air	28-Aug-2010 02:29:44	OTI-LNE	OTI-LNE	28-Aug-2010 02:29:44
NextMobile 2	On-air	28-Aug-2010 02:29:44	On-air	On-air	28-Aug-2010 02:29:44
NextMobile 2	On-air	28-Aug-2010 02:29:44	On-air	On-air	28-Aug-2010 02:29:44
U-807	On-air	28-Aug-2010 02:29:44	OTI-LNE	OTI-LNE	28-Aug-2010 02:29:44
U-816	On-air	28-Aug-2010 02:29:44	OTI-LNE	OTI-LNE	28-Aug-2010 02:29:44
U-833	On-air	28-Aug-2010 02:29:44	OTI-LNE	OTI-LNE	28-Aug-2010 02:29:44
U-838	On-air	28-Aug-2010 02:29:44	OTI-LNE	OTI-LNE	28-Aug-2010 02:29:44
U-843	On-air	28-Aug-2010 02:29:44	OTI-LNE	OTI-LNE	28-Aug-2010 02:29:44
U-851	On-air	28-Aug-2010 02:29:44	OTI-LNE	OTI-LNE	28-Aug-2010 02:29:44
U-858	On-air	28-Aug-2010 02:29:44	OTI-LNE	OTI-LNE	28-Aug-2010 02:29:44
U-1156	On-air	28-Aug-2010 02:29:44	OTI-LNE	OTI-LNE	28-Aug-2010 02:29:44
U-1158	On-air	28-Aug-2010 02:29:44	OTI-LNE	OTI-LNE	28-Aug-2010 02:29:44
U-1401	On-air	28-Aug-2010 02:29:44	OTI-LNE	OTI-LNE	28-Aug-2010 02:29:44
U-1402	On-air	28-Aug-2010 02:29:44	OTI-LNE	OTI-LNE	28-Aug-2010 02:29:44
G-Sprint	On-air	28-Aug-2010 02:29:44	OTI-LNE	OTI-LNE	28-Aug-2010 02:29:44
G-Verizon	On-air	28-Aug-2010 02:29:44	OTI-LNE	OTI-LNE	28-Aug-2010 02:29:44
G-AT&T	On-air	28-Aug-2010 02:29:44	OTI-LNE	OTI-LNE	28-Aug-2010 02:29:44
G-Orange	On-air	28-Aug-2010 02:29:44	OTI-LNE	OTI-LNE	28-Aug-2010 02:29:44
- Internet Map:** A smaller map showing a detailed view of a residential area with a blue location marker. A sidebar on the left lists the same subscribers as the MapFour map.
- Messages:** A window displaying a list of messages with columns for To, Message, and Date/Time. The messages are categorized into Inboxes, Sent, and Pending.

## neoNytro Node



The screenshot displays the neoNytro Node software interface with the following components:

- GPS Reports:**

Function	Date
Date/Time	30 Aug 2010 06:38:00 PM
Unit ID	2
Latitude	43.7671533
Longitude	-80.0521681
Altitude	1
Direction	118
- Control Stations:**

Name	Radio	XCOMP
Voice 1	ONLINE	ONLINE
Voice 2	OFFLINE	OFFLINE
Voice 3	OFFLINE	OFFLINE
Voice 4	OFFLINE	OFFLINE
Repeater 1	ONLINE	ONLINE
Repeater 2	OFFLINE	OFFLINE
Repeater 3	OFFLINE	OFFLINE
Repeater 4	OFFLINE	OFFLINE
- Traffic:**

Date/Time	Unit ID	Message
30 Aug 2010 06:39:00 PM	2	GPS report on site 1
30 Aug 2010 06:38:30 PM	2	GPS report on site 1
30 Aug 2010 06:38:00 PM	2	GPS report on site 1
30 Aug 2010 06:37:30 PM	2	GPS report on site 1
30 Aug 2010 06:37:00 PM	2	GPS report on site 1
30 Aug 2010 06:36:30 PM	2	GPS report on site 1
30 Aug 2010 06:36:00 PM	2	GPS report on site 1
30 Aug 2010 06:35:30 PM	2	GPS report on site 1
30 Aug 2010 06:35:00 PM	2	GPS report on site 1
30 Aug 2010 06:34:30 PM	2	GPS report on site 1
30 Aug 2010 06:34:00 PM	2	GPS report on site 1
30 Aug 2010 06:33:30 PM	2	GPS report on site 1
30 Aug 2010 06:33:00 PM	2	GPS report on site 1
30 Aug 2010 06:32:30 PM	2	GPS report on site 1
30 Aug 2010 06:32:00 PM	2	GPS report on site 1
30 Aug 2010 06:31:30 PM	2	GPS report on site 1
30 Aug 2010 06:31:00 PM	2	GPS report on site 1
30 Aug 2010 06:30:30 PM	2	GPS report on site 1
30 Aug 2010 06:30:00 PM	2	GPS report on site 1
30 Aug 2010 06:29:30 PM	2	GPS report on site 1
30 Aug 2010 06:29:00 PM	2	GPS report on site 1
30 Aug 2010 06:28:30 PM	2	GPS report on site 1
30 Aug 2010 06:28:00 PM	2	GPS report on site 1
30 Aug 2010 06:27:30 PM	2	GPS report on site 1
30 Aug 2010 06:27:00 PM	2	GPS report on site 1
30 Aug 2010 06:26:41 PM	6	Test ACK on site 21
- Presence Monitor:**

Date/Time	Unit ID	Online	System
30 Aug 2010 05:04:10 PM	6	True	System 1
30 Aug 2010 05:04:36 PM	2	True	System 1



## Contact

48 Centennial Road, Unit 7  
Orangeville, Ontario  
L9W 3T4

Email: [sales@neoterra.ca](mailto:sales@neoterra.ca) | [neoterra.ca](http://neoterra.ca)

Telephone +1 (519) 940 0088

Fax +1 (519) 940 8813